



温州汉风机械有限公司

地址:浙江温州市龙湾区空港新区滨海二路28号永兴小微园北区6幢
电话: 0577-86705809/86705807/86705808
传真: 0577-86705810
Http://www.longya.net
E-mail:Sales@royalairbrush.com
Sales1@royalairbrush.com
QQ:771915630/76944869

WENZHOU HANFONG MACHINERY CO.,LTD.

ADD: Block 6, No.28, Binhai Road 2, Konggang New District,
Wenzhou City, Zhejiang Province 325025, China
English Line: 0086- 577-8670-5808
Chinese Line: 0086- 577-8670-5809 8670-5807
Fax: 0086-577-8670-5810
Http://www.royalairbrush.com
E-mail: Sales@royalairbrush.com
info@royalairbrush.com
Sales2@royalairbrush.com
Sales7@royalairbrush.com
Sales8@royalairbrush.com
QQ: 771915630/76944869



汉风·龙牙
Catalog 2019-2020

温州汉风机械有限公司

WENZHOU HANFONG MACHINERY CO.,LTD.

Manufacturer of
Mini air compressor, Airbrush Kit



Perfect for your excellent spray painting art!
It's good for beautifying our life!

Brief Introduction

(WENZHOU HANFONG MACHINERY CO.,LTD.) designs and manufactures the most efficient and powerful oil-less mini air compressors, airbrushes, airbrush holders, sun tanning systems and accessories in Wenzhou city,China.

Which enjoys convenient transportation and attractive scenery, only 200 km away from Ningbo seaport and about 500km away from Shanghai seaport.

Our products are specially suited for Airbrush Tanning, Tattoo,Make-up,Airbrush T-shirt,ArtDesigns, Advertising Spray,and so on. These maintenance-free, ultra-quiet, and light weight. products have a proven track record of quality, durability, and reliability.

We takes great pride in meeting the needs of its customers with speedy professionalism. our R&D department can customize its products to meet the unique requirements of your application. Factory certified with ISO 9001:2008 Airbrush with CE approvals and Air compressors with CE, UL approvals.



Office Corner(办公室角落)



Visiting of Yao Gaoyuan, The Secretary of Wenzhou Municipal Committee to Wenzhou Hanfong Machinery Co.,Ltd.(温州市长姚高员, 龙湾区长周一富等领导访问汉风公司。)



Office Corner(办公室角落)



Royalmax Sales Team (Royalmax销售团队)



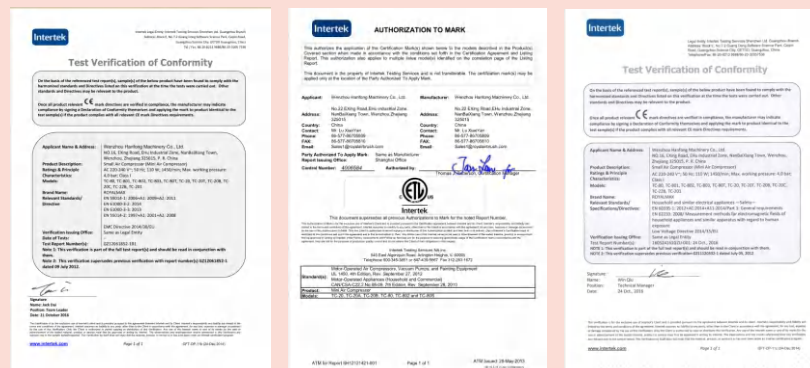
Sample Room (样品室)



Semi-Manufactured Air pump (半成品气泵)



Factory Building (厂房)





TC-01K

Power: 9V/2A
 Battery : Li-ion 2000mAh/7.4V
 AC Adapter Input: 90V-264V/50-60Hz;
 DC Adapter output: 9V/2A
 Air flow: 10L/Min
 Auto stop , start at 1Bar,stop at 1.5Bar
 Dimension: 204*192*95mm
 Weight:1.2kg
 Airbrush:AB-130(Optional)
 Standard nozzle Dia.: 0.4mm
 Alternative nozzle Dia.:0.2mm, 0.3mm,0.4mm, 0.5mm
 Cup size:7CC
 Air Hose:1.0M



TC-02

Power: USB 5V/1A
 Battery : Li-ion 500mAh/7.4V
 Air flow: 7L/MIN
 Working pressure:2-20PSI(adjustable pressure)
 Standard nozzle dia.: 0.3MM
 Alternative nozzle dia.:0.3mm, 0.4mm, 0.5mm
 (Up to 10 minutes the device will automatica switch off).
 Working hours:50MIN
 Charging time is 1.5 hours, it will interrupt operation on charging time.
 Control switch:
 Press the switch to turn on the device.
 The first press switch-turn on.
 The second press switch-decrease spray.
 Third press switch-turn off.
 LED Display:
 On:Blue Light on; Lower battery:Flashing light
 On charging time:Red Light; Full charged: Green Light on

TC-03BK

Power: USB 5V/1A
 Battery : Li-ion 500mAh/7.4V
 Air flow: 7L/MIN
 Working pressure:2-20PSI(adjustable pressure)
 Working hours:50MIN
 Charging time is 1.5 Hours,
 It will interrupt operation on charging time
 USB Line LED Display:
 On charged: Red Light on,
 Full charged: Blue Light on
 Airbrush: AB-131(Optional)
 Standard nozzle dia.: 0.4mm
 Alternative nozzle dia.:0.3mm, 0.4mm, 0.5mm
 Cup size:7CC(Optional)



TC-04K

Power: USB 5V/1A
 Battery : Li-ion 500mAh/7.4V
 Air flow: 7L/MIN
 Working pressure:2-20PSI(adjustable pressure)
 Working hours:50MIN
 Charging time is 1.5 Hours,
 It will Interrupt operation on charging time
 USB Line LED Display:
 On charged: Red Light on,
 Full charged: Blue Light on
 Airbrush: AB-140(Optional)
 Standard nozzle dia.: 0.4mm
 Alternative nozzle dia.:0.3mm, 0.4mm, 0.5mm
 Cup size:7CC
 Color Optional: Red, Golden



TC-04AK

Power: USB 5V/1A
 Battery : Li-ion 500mAh/7.4V
 Air flow: 7L/MIN
 Working pressure:2-20PSI(adjustable pressure)
 Working hours:50MIN
 Charging time is 1.5 Hours,
 It will interrupt operation on charging time
 USB Line LED Display:
 On charged: Red Light on,
 Full charged: Blue Light on
 Airbrush: AB-140(Optional)
 Standard nozzle dia.: 0.4mm
 Alternative nozzle dia.:0.3mm, 0.4mm, 0.5mm
 Cup size:7CC
 Color Optional: Red, Pink



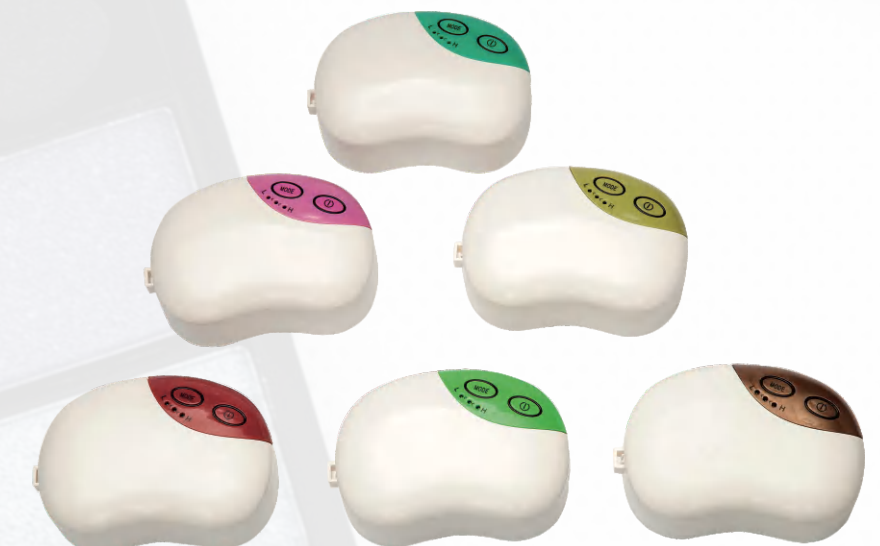
TC-12K

Power: 12V/1.6A
 AC Adapter Input: 100V-250V/50-60Hz;
 DC Adapter Output: 12V/1.6A
 Max.pressure:18PSI
 Air flow: 13L/Min
 Weight:0.7KG
 Dimension: 132*92*61mm
 Support color: green ,pink,red,gold,yellow
 Including:
 1*mini airbrush compressor
 1*single action airbrush AB-209(optional)
 1* latex hose(1. 5M)
 1*AC adapter(support EU ,US ,UK ,Korea)
 1* airbrush holder



TC-11K

Power: USB 5V/1A
 Battery : Li-ion 800mAh/7.4V
 Air flow: 7L/MIN
 Working pressure:2-20PSI(adjustable pressure)
 Working hours:60MIN
 Charging time is 1.5 hours,
 it will interrupt operation on charging time.
 Control switch:
 Press the switch to turn on the device.
 The first press switch-turn on.
 The Second press switch-decrease spray.
 Third press switch-turn off.
 LED Display:
 On: Blue Light on; Lower battery: Flashing light
 On charging time:Red Light; Full charged: Green Light on
 Product size:95*70*50mm
 Airbrush:AB-207(Optional)
 Standard nozzle dia.: 0.4mm
 Alternative nozzle dia.:0.3mm, 0.4mm, 0.5mm
 Cup size:2CC
 Air Hose:1.5M



TC-100K

Power: 12V/1.6A
 AC adapter
 Input:100-250V, 50-60HZ
 Output:DC 12V,1.6A
 Max.pressure:28psi
 Air flow:10L/Min
 Weight:0.7KG
 Dimension: 140* 85*61mm
 Support color:white,yellow,black
 Including:
 1*mini compressor
 1*single action airbrush AB -130(optional)
 1* black hose(1.8M)
 1* AC adapter(support EU ,US ,UK ,Korea)
 1*airbrush holder



TC-101K

Power: 12V/1.6A
 AC adapter:
 Input:100-250V, 50-60HZ
 Output:DC 12V,1.6A
 Max.pressure:28psi
 Air flow:10L/Min
 Weight:0.7KG
 Dimension: 140*85*61mm
 Support color: blue,white
 Including:
 1*mini compressor
 1*single action airbrush AB-130(optional)
 1* latex hose(1.5M)
 1*AC adapter
 1* airbrush holder



TC-100AK

Auto stop at 1.5bar,auto start at 1bar
 Including:
 1*mini compressor
 1*dual action airbrush AB -130(optional)
 1* black hose(1.8M)
 1* AC adapter(support EU ,US ,UK ,Korea)
 1*airbrush holder



TC-101AK

Auto stop at 1.5bar,auto start at 1bar
 Including:
 1*mini compressor
 1*dual action airbrush AB-130(optional)
 1* latex hose(1.5M)
 1*AC adapter
 1* airbrush holder



AB-210

Feed Type: Gravity
Standard Nozzle Dia: 0.4mm
Alternative Nozzle Size: 0.2, 0.3, 0.4, 0.5mm
Cup Capacity: 7cc
Working Pressure: 15-50PSI
Single - action Trigger Air-paint Control
PCS/CTN: 50
N.W./G.W.: 15/17.5KGS



Trigger



AB-140

Feed Type: Gravity
 Standard Nozzle Dia: 0.3mm
 Alternative Nozzle Size:0.2,0.3,0.4 ,0.5mm
 Cup Capacity: 7cc
 Working Pressure:15-50PSI
 Double-action Trigger Air-paint Control
 PCS/CTN:50
 N.W./G.W.:15/17.5KGS



AB-205

Feed Type: Gravity
 Standard Nozzle Dia: 0.3mm
 Alternative Nozzle Size:0.2,0.3,0.4 ,0.5mm
 Cup Capacity: 9cc
 Working Pressure:15-50PSI
 Double-action Trigger Air-paint Control
 PCS/CTN:50
 N.W./G.W.:15/17.5KGS



AB-130

Feed Type: Gravity
 Standard Nozzle Dia: 0.3mm
 Alternative Nozzle Size:0.2,0.3,0.4 ,0.5mm
 Cup Capacity: 7cc
 Working Pressure:15-50PSI
 Double -action Trigger Air-paint Control
 PCS/CTN:50
 N.W./G.W.:15/17.5KGS



AB-131

Feed Type: Gravity
 Standard Nozzle Dia.:0.3mm
 Alternative Nozzle Size:
 0.2mm, 0.3mm, 0.4mm,0.5mm
 Cup Capacity:1 *20CC & 1*40CC
 Working Pressure: 15- 50PSI
 Dual-Action Trigger Air-paint Control
 Carton Dimensions(CM) :57x40x30
 PCS/CTN:50
 N.W./G.W.:16/18.5KGS



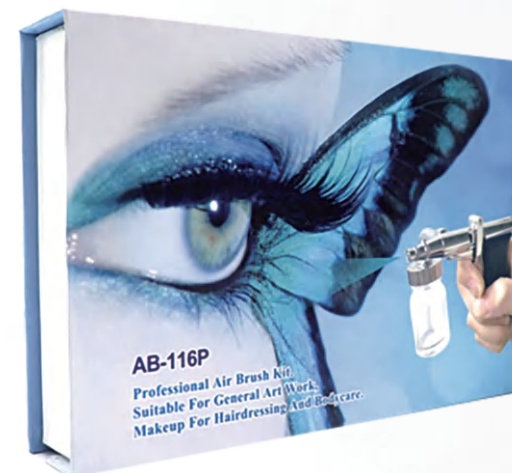
AB-115K

Feed Type: Gravity
 Standard Nozzle Dia.:0.3 mm
 Alternative Nozzle Size: 0.3mm,0.5mm
 Cup Capacity:20cc
 PU AIR HOSE: 5ft
 REGULATOR:G1/4(F)-G1/8(M)
 Working Pressure:15-50psi
 Single-action Trigger Air-paint Control.
 Carton Dimensions(cm):50.5*39*32
 PCS/CTN:20
 N.W./G.W.:13*15.5KGS



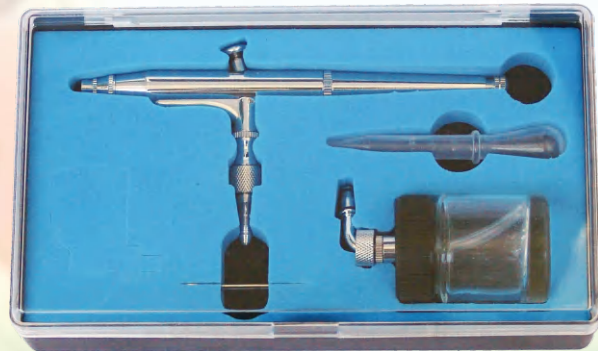
AB-116PS

Feed Type: Gravity
 Standard Nozzle Dia:0.4mm
 Alternative Nozzle Size:0.3mm,0.4mm, 0.5mm
 Cup Capacity:22CC
 Working Pressure:15-50PSI
 Single-action Trigger Air-paint Control
 Carton Dimensions(cm):48.5*34*27.5
 PCS/CTN:20
 N.W./G.W.:9/11.5KGS



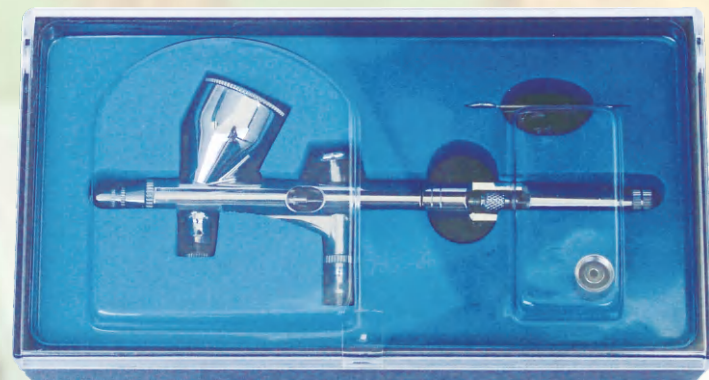
AB-133

Feed Type: Suction
 Standard Nozzle Dia.:0.3mm
 Alternative Nozzle Size:
 0.2mm, 0.3mm, 0.5mm
 Cup Capacity:22CC
 Working Pressure: 15- 50PSI
 Dual-Action Trigger Air-paint Control
 Carton Dimensions(CM) :57x40x30
 PCS/CTN:50
 N.W./G.W.:16/18.5KGS



AB-180

Feed Type: Gravity
 Standard Nozzle Dia.:0.2mm
 Alternative Nozzle Size:
 0.2mm, 0.3mm, 0.5mm
 Cup Capacity:9CC
 Working Pressure: 15- 50PSI
 Dual-Action Trigger Air-paint Control
 Carton Dimensions(CM) :55.5x42x25
 PCS/CTN:50
 N.W./G.W.:15/17.5KGS



TC-20BK

Single cylinder piston compressor
 Power: 1/5 HP
 Voltage: 220-240V / 50HZ ,
 110-120V/60HZ, 220V / 60HZ
 Air flow: 23-25L/min
 Auto stop function: start at 3Bar, stop at 4Bar
 (special pressure available)
 Fitting:manometer; pressure regulator;air filter
 Connctions: with connection 1/8 BSP
 Including:
 1*mini compressor
 1*dual- action airbrush AB-130(optional)
 1* air hose AH-24
 1* airbrush holder AH-305(optional)



TC-20TK

Single cylinder piston compressor
 Power: 1/5HP
 Voltage: 220-240V / 50Hz,
 110-120V/60Hz, 220V / 60Hz
 Air flow: 23-25/min.
 Auto stop function: start at 3Bar, stop at 4Bar
 (special pressure available)
 Safety valve:
 release the air pressure automatically
 when the pressure over 6bar in the air tank.
 Max.pressure:6.5Bar/95Psi
 Air tank: 3.0L
 Fitting: manometer; pressure regulator; air filter
 Connections: with connection 1/8 BSP
 Including:
 1*mini compressor
 1*dual- action airbrush AB-130(optional)
 1* air hose AH-24
 1* airbrush holder AH-305(optional)



TC-18K

Single cylinder piston compressor
 Power: 1/5 HP
 Voltage: 220-240V / 50HZ ,
 110-120V/60HZ, 220V / 60HZ
 Air flow: 23-25L/min
 Auto stop function: start at 3Bar, stop at 4Bar
 (special pressure available)
 Fitting: manometer; pressure regulator; air filter
 Connections: with connection 1/8 BSP
 Including:
 1*mini compressor
 1*dual- action airbrush AB-130(optional)
 1* air hose AH-24
 1* airbrush holder AH-305(optional)



TC-802K

Single cylinder piston compressor
 Power: 1/5 HP
 110-120V/60HZ, 220V / 60HZ
 Voltage: 220-240V / 50HZ ,
 Air flow/litres: 23-25L/min
 Auto stop function: start at 3Bar, stop at 4Bar
 (special pressure available)
 Fitting: manometer; pressure regulator; air filter
 Connections: with connection 1/8 BSP
 Including:
 1*mini compressor
 1*dual- action airbrush AB-130(optional)
 1* air hose AH-24
 1* airbrush holder AH-305(optional)



TC-18TK

Single cylinder piston compressor
 Power: 1/5HP
 Voltage: 220-240V / 50Hz,
 110-120V/60Hz, 220V / 60Hz
 Air flow: 23-25/min.
 Auto stop function: start at 3Bar, stop at 4Bar
 (special pressure available)
 Safety valve:
 release the air pressure automatically when
 the pressure over 6bar in the air tank.
 Max.pressure:6.5Bar/95Psi
 Air tank: 3.0L
 Fitting: manometer; pressure regulator; air filter
 Connections: with connection 1/8 BSP
 Including:
 1*mini compressor
 1*dual- action airbrush AB-130(optional)
 1* air hose AH-24
 1* airbrush holder AH-305(optional)



TC-80TK

Single cylinder piston compressor
 Power: 1/5HP
 110-120V/60Hz, 220V / 60Hz
 Voltage: 220-240V / 50Hz,
 Air flow: 23-25/min.
 Auto stop function: start at 3Bar, stop at 4Bar
 (special pressure available)
 Safety valve: release the air pressure
 automatically when the pressure over
 6bar in the air tank.
 Max.pressure:6.5Bar/95Psi
 Air tank: 3.0L
 Fitting: manometer; pressure regulator; air filter
 Connections: with connection 1/8 BSP
 Including:
 1*mini compressor
 1*dual- action airbrush AB-130(optional)
 1* air hose AH-24
 1* airbrush holder AH-305(optional)



TC-812K

- Single cylinder piston compressor
- Power: 1/5 HP
- 110-120V/60HZ, 220V / 60HZ
- Voltage: 220-240V / 50HZ ,
- Air flow/litres: 23-25L/min
- Auto stop function: start at 3Bar, stop at 4Bar (special pressure available)
- Fitting: manometer; pressure regulator;air filter
- Connections: with connection 1/8 BSP
- Including:
- 1*mini compressor
- 1*dual- action airbrush AB-130(optional)
- 1* air hose AH-24
- 1* airbrush holder AH-305(optional)



TC-90K

- Twin cylinder piston compressor (Oil-free)
- Power: 1/3HP
- Voltage: 220-240V / 50Hz, 110-120V/60Hz, 220V / 60Hz
- Air output: 30~35L/min.
- Double switches:
- Switch 1:
- Auto stop function: start at 3Bar, stop at 4Bar
- Switch 2:
- Max. pressure at 6.5 bars;
- Pressure adjusting range: 0~6.5 bars
- Fitting: Manometer; pressure regulator; air filter
- Connections: with connection 1/8 BSP (1/8 NPT available)
- Including:
- 1*mini compressor
- 1*dual- action airbrush AB-130(optional)
- 1* air hose AH-24
- 1* airbrush holder AH-305(optional)



Note:
